

SPECIFICATIONS:

PART 1 - MATERIAL:

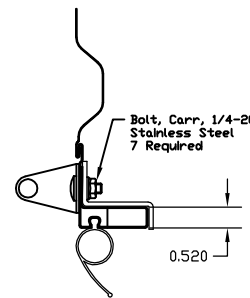
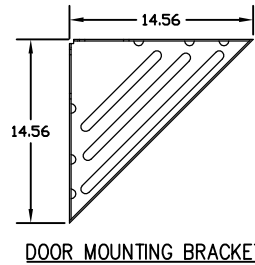
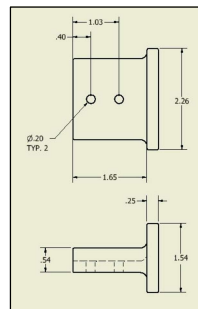
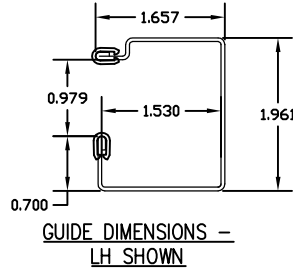
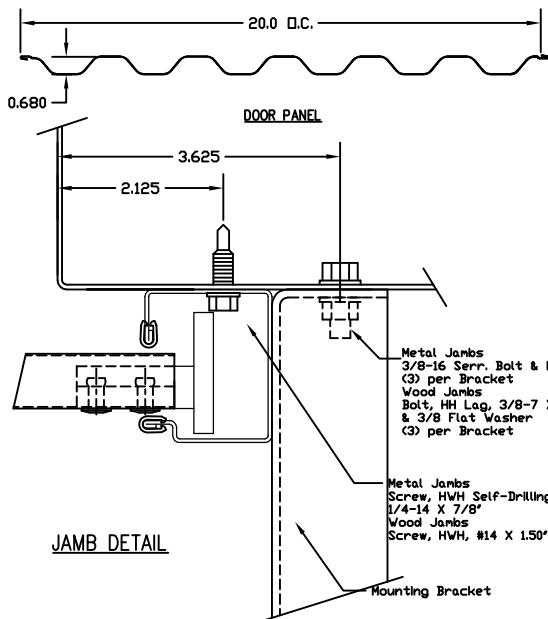
- 1.01 Door Guides:** Door guides are to be manufactured from 18 gauge (0.047" min.) ASTM A-653 steel, hot dipped galvanized per ASTM A-924 (G-40). Edges covered with polypropylene runners for smooth operation.
- 1.02 Door Curtain:** Door curtains are to be manufactured from 26 gauge (0.018" min.) Grade 80 steel per ASTM A-653, hot dipped galvanized per ASTM A-924 (G-40). Equipped with SpaceGuard latch, Steel and Zinc cast part, with powder coating finish. Secured with 3 - $\frac{3}{8}$ " Jam Nuts
- 1.03 Door Bracket:** Door brackets are to be manufactured from 10 gauge (0.134") ASTM A-653 steel, hot dipped galvanized per ASTM A-924.
- 1.04 Bottom Bar Assembly:** Door bottom bar to be roll formed from 22 gauge (0.030" min.) ASTM A1011 galvalume, hot dipped, min. yield of 50 ksi. Door backup angle to be manufactured from 12 gauge ASTM A-653 steel, hot dipped galvanized per ASTM A-924 (G-40).
- 1.05 Door Curtain Windlock:** Door curtain windlocks are located as required to meet specific windload & manufactured from Black Nylon 6/6. Each windlock secured to the door curtain with two $\frac{3}{16}$ " stainless steel rivets. (22 windlocks as tested on 7 ft. tall door)

PART 2 - TESTING:

2.01 General: Structural Performance under Uniform Load per ASTM E 330 to safely resist a positive or negative wind load as noted below. A test load of 1.5 x design load has been used.
Design Load = +25/-22 PSF

PART 3 - EXECUTION:

3.01 General: Trac-Rite rolling steel doors shall be installed following Trac-Rite assembly instructions.



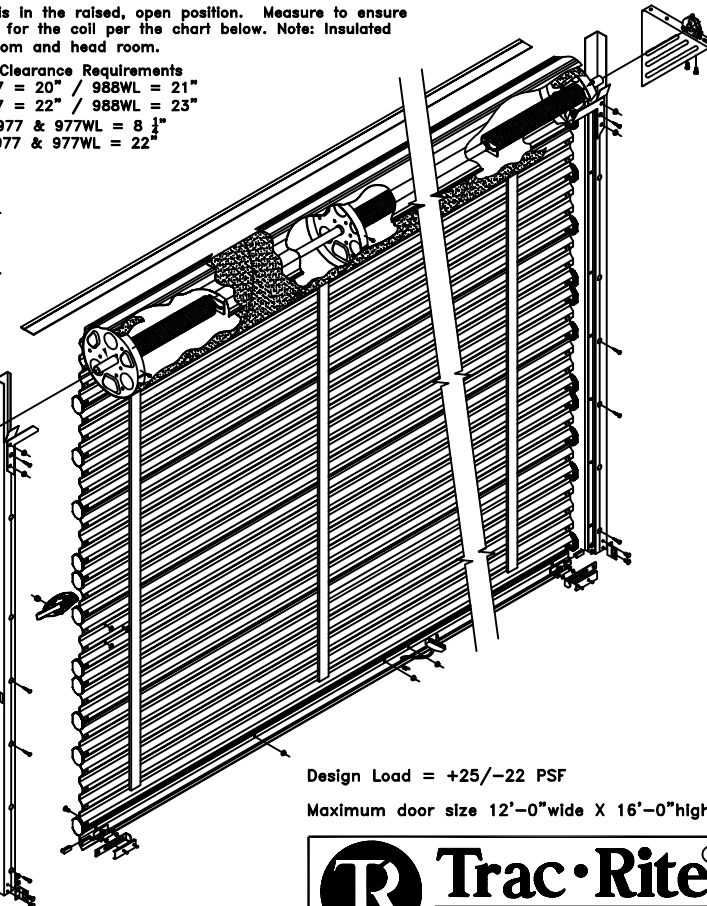
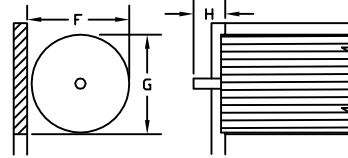
MODEL 977WL ROLLING CURTAIN DOOR

977WL, 12'-0"

OVERHEAD DOOR CLEARANCE:

The door coils into a roll when the door is in the raised, open position. Measure to ensure there is enough clearance above the door for the coil per the chart below. Note: Insulated doors require an additional 1" of back room and head room.

- F = Back Room
 - G = Head Room
 - H = Side Room
 - H = Motor Operator
- Minimum Clearance Requirements**
 Model 977 = 20" / 988WL = 21"
 Model 977 = 22" / 988WL = 23"
 Model 977 & 977WL = 8 $\frac{1}{4}$ "
 Model 977 & 977WL = 22"



Design Load = +25/-22 PSF
 Maximum door size 12'-0" wide X 16'-0" high.

Trac-Rite Door Inc.
 314 Wilburn Road, Sun Prairie, WI 53590
 608-837-7899; TOLL FREE: 800-448-8979
 FAX: 608-837-0251

DRAWN BY _____
 CHECKED BY _____ SCALE: None
 DATE _____ SHEET _____ OF _____

Trac-Rite Order # _____